

GENERAL NOTES

- REFER TO DRAWING E001 FOR LEGEND OF SYMBOLS AND APPLICABLE GENERAL NOTES.
- REFER TO THE SPECIFICATION FOR THE SCHEDULE OF LUMINAIRES.
- WIRING TO LUMINAIRES IN THE CARPARK SHALL BE PVC INSULATED AND PVC SHEATHED COPPER CABLE ENCLOSED IN HEAVY DUTY RIGID UPVC CONDUIT CAST IN THE CONCRETE SLAB.
- UNLESS NOTED OTHERWISE IN THE CONDUIT DESIGNATIONS BELOW, ALL WIRING FOR LANDSCAPE AND COURTYARD LIGHTING SHALL BE ENCLOSED IN 32mm DIAMETER U/G RIGID PVC CONDUITS.

LIGHTING LAYOUT REFERENCE NOTES

- FINAL LOCATION OF THE LUMINAIRES IN THE PLANT AND SWITCHROOMS SHALL BE DETERMINED AND CO-ORDINATED ON SITE TO SUIT THE FINAL LAYOUT OF THE PLANT, SWITCHBOARDS AND EQUIPMENT.
- FINAL LOCATION OF THE LUMINAIRES IN THE CARPARK AREAS SHALL BE DETERMINED AND CO-ORDINATED ON SITE TO SUIT THE LOCATION OF STRUCTURAL BEAMS AND OTHER SERVICES. ALLOW FOR MINOR ADJUSTMENTS AS NECESSARY.
- DETECTORS TO CONTROL THE LIGHTING IN THE CARPARK DRIVEWAY AND PARKING BAYS.
- LUMINAIRE TYPE EB IN CARPARK ENTRY SHALL BE CONTROLLED BY A TIME SCHEDULE VIA THE CONSIGN LIGHTING CONTROL SYSTEM TO SWITCH ON DURING THE DAY AND OFF AT NIGHT.
- LUMINAIRE TYPE EB IN CARPARK ENTRY SHALL BE CONTROLLED BY A TIME SCHEDULE VIA THE CONSIGN LIGHTING CONTROL SYSTEM TO SWITCH ON DURING THE DAY AND OFF AT NIGHT.
- FINAL LOCATION OF PHOTO ELECTRIC SWITCHES TO BE DETERMINED ON SITE TO PROVIDE OPTIMUM SWITCHING PERFORMANCE.
- REFER TO THE LANDSCAPE LIGHTING DRAWINGS FOR THE FINAL LOCATION OF ALL LANDSCAPE LIGHTING AND LIGHTING IN COURT YARDS.
- ENCLOSURE WIRING IN HEAVY DUTY RIGID UPVC UNDERGROUND CONDUITS USING CONDUIT SIZES SHOWN BELOW.
- 32mm DIAMETER RIGID PVC CONDUIT CAST IN WALL FOR W2 LIGHTING CIRCUIT.

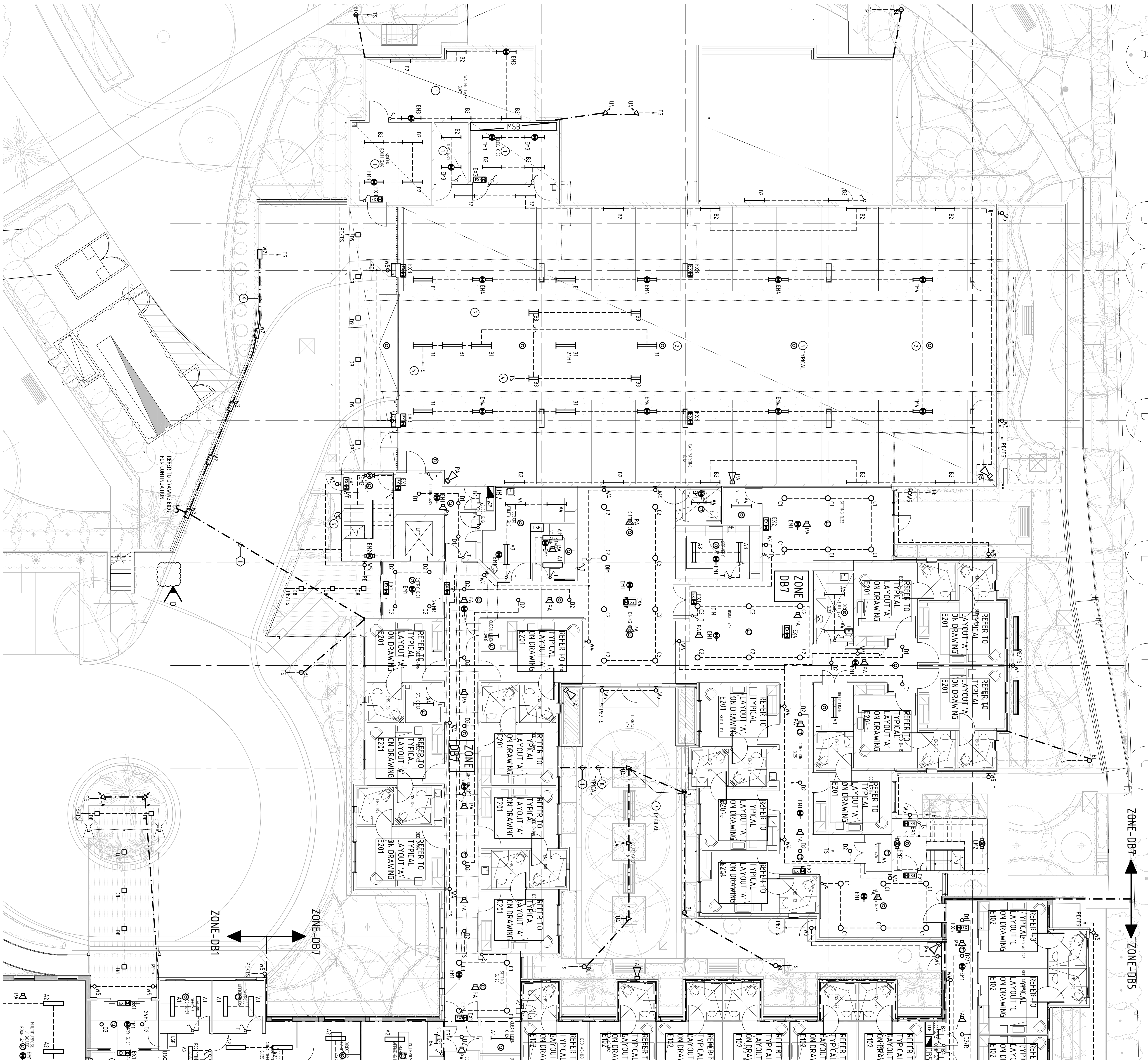
LIGHTING CONTROLS

- UNLESS NOTED OTHERWISE ON THE DRAWINGS, ALL LIGHTING INSTALLED OUTSIDE THE RESIDENT'S BEDROOMS SHALL BE CONTROLLED BY A CONSIGN LIGHTING CONTROL SYSTEM. REFER TO TYPICAL LIGHTING CONTROL SYSTEMS BEHIND SWITCHROOMS PLANT ROOMS AND SERVICES. THE OPERATORS SHALL BE MANUALLY SWITCHED.
- LINSE WITH CONSIGN AUSTRALIAN NET BROWN W. 80/90 0464231 FOR THE PROPOSED OPERATION OF THE CONSIGN LIGHTING CONTROL SYSTEM PRIOR TO TENDERING.
- PROVIDE THE NECESSARY CONTACTORS AT THE DIS TRIBUTION BOARDS TO SWITCH THE LIGHTING CONTROLLED BY THE CONSIGN LIGHTING CONTROL SYSTEM AS INDICATED ON THE TYPICAL LIGHTING CONTROL SCHEMATIC ON DRAWING E001.
- ALL CONSIGN LIGHTING CONTROL COMPONENTS AND CONTACTORS SHALL BE INSTALLED WITHIN A SEPARATE P42 ENCLOSURE LOCATED ADJACENT TO THE DISTRIBUTION BOARDS.
- EXTERNAL LIGHTING OPERATION AND SWITCHING SHALL BE CO-ORDINATED WITH THE CLIENT PRIOR TO COMMENCING WORKING.

LEGEND

- 3200 PIR PRESURE DETECTOR USED FOR LIGHT SWITCHING.
- CONSIGN CPN1/36P
- LIGHTING SWITCHING PANEL - CONSIGN
- LIGHT CONTROL PANEL - CONSIGN
- PHOTO ELECTRIC SWITCH WITH VOLTAGE FREE CONTACT.
- 24V TACTILE SWITCH - CONSIGN CPN1
- ALL SWITCHES TO BE SECURED WITH PHD FIXING SCREWS ON BACK OF SWITCH PLATE
- 5SA 230V KEY OPERATED LIGHT SWITCH.
- LIGHTING CONTROLLED BY PHOTO ELECTRIC SWITCH VIA THE LIGHTING CONTROL SYSTEM WITH OVERIDE AT LTP
- PE
- LIGHTING CONTROLLED BY PHOTO ELECTRIC SWITCH IN SERIES WITH THE SCHEDULE CONTROL WITH OVERIDE AT LTP
- FE/T/S
- LIGHTING CONTROLLED BY THE SCHEDULE WITH OVERIDE AT LTP.
- LIGHTING CONTROLLED AT THE LIGHTING CONTROL PANEL LCP
- TS
- 24HR
- U/R
- DM
- DM

FOR CONTINUATION REFER DWG E102



CONDUIT DESIGNATIONS

- 1- 100mm DIAMETER CONDUIT.

CONSTRUCTION ISSUE

THESE DRAWINGS HAVE BEEN MARKED "CONSTRUCTION ISSUE" ON THE UNDERSI PLATING THAT THEY ARE TO BE USED AS THE BASIS FOR THE COMMENCEMENT OF THE SUB CONTRACTOR'S SHOP DRAWING PROCESS.

Waterman ASSI and Pty Ltd  
60 Park Street, South Melbourne, Victoria 3205 Australia  
t: (03) 9665 9900 f: (03) 9665 9999 [waterman@waterman.com.au](mailto:waterman@waterman.com.au)

Thomson

Thomson

Level 1  
402/404 State Street  
South Melbourne  
VIC 3205  
[www.thomsonaustralia.com](http://www.thomsonaustralia.com)

Page 031 0608 6116  
South Melbourne  
t: (03) 9665 9900 f: (03) 9665 9999  
t: (03) 9665 9900 f: (03) 9665 9999  
t: (03) 9665 9900 f: (03) 9665 9999

Page 031 0608 6116  
South Melbourne  
t: (03) 9665 9900 f: (03) 9665 9999  
t: (03) 9665 9900 f: (03) 9665 9999  
t: (03) 9665 9900 f: (03) 9665 9999

ASSI CENTRE  
EXISTING AGED CARE BUILDING &  
NEW RETIREMENT ACCOMMODATION  
230 ROSANNA RD, ROSANNA

Time  
ELECTRICAL SERVICES  
GROUND FLOOR - SHEET 1  
LIGHTING AND PUBLIC ADDRESS  
LAYOUT

Drawn  
P.G.  
Checked  
J.V.

Date  
AUG 2010  
Scale  
1:100 @ B1

Job No  
4905

Revision  
D

Time: 3:49 P.M. Date: 21/11/2011 Scale: 1:100 Drawing File: E-LPGG.DWG Plot by: siberio